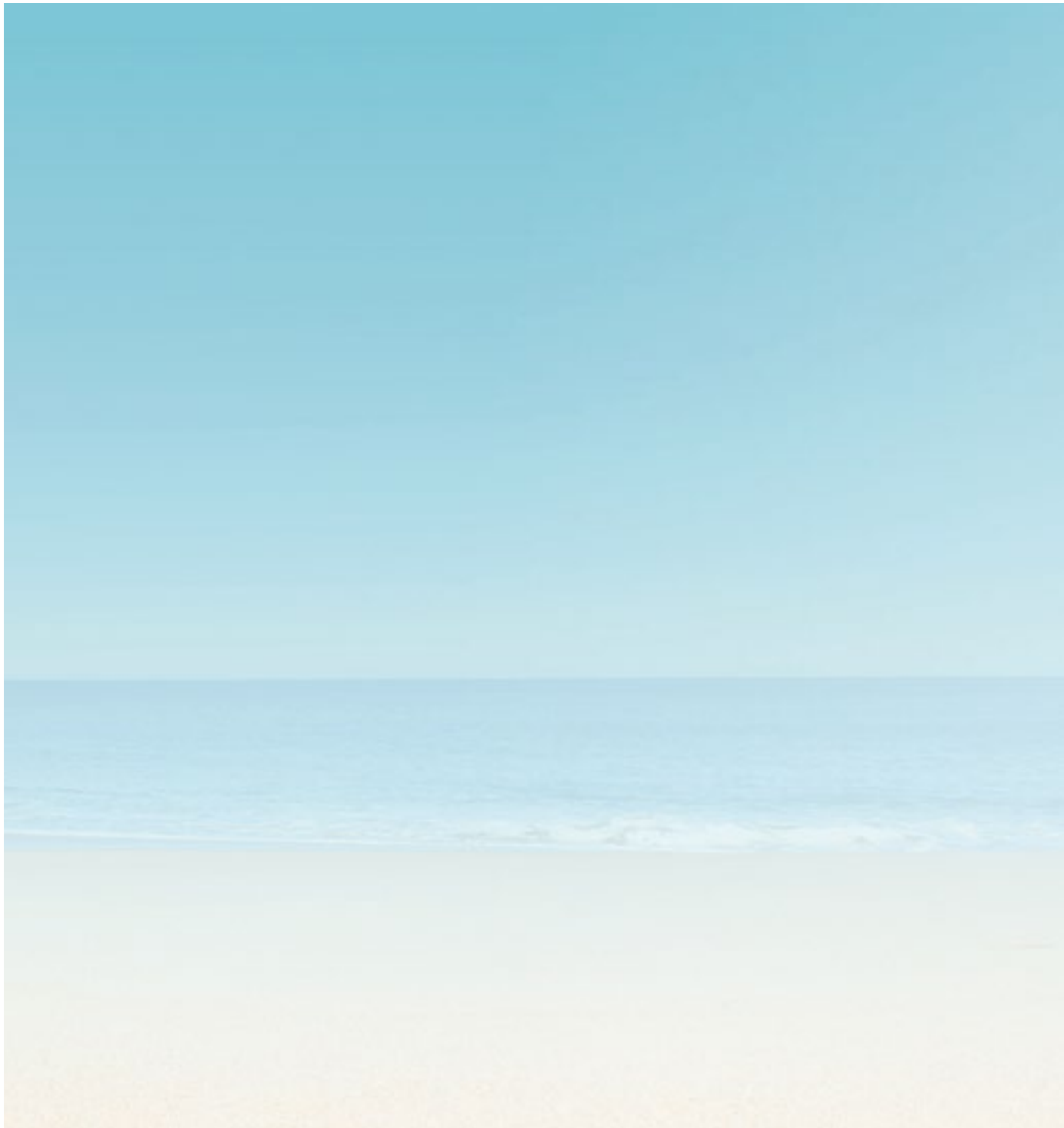


The background of the entire page is an aerial photograph of a spa pool. The water is marbled with various shades of blue, from light turquoise to deep navy, and is accented with shimmering gold particles. The patterns are organic and swirling, creating a sense of depth and movement. The lighting is bright, giving the water a glossy, almost ethereal appearance.

**CAMELOT SPA** 

Your World Of Wellness



Radiate in the blissfulness of the relaxation that only time spent in the spa can give you.

*Awaken to a renewed sense of health and wellness at Camelot Spa – Since 1997*



## MASSAGE THERAPY

|                                     |        |      |   |
|-------------------------------------|--------|------|---|
| Camelot Universal Signature Massage | 60 min | R760 | A combination of Hot Stone, Kahuna, Balinese and Indian Head massage techniques for those who want to experience various types of massage. This massage incorporates the use of our unique massage candle, where the fragrance and softness of your skin lingers in your mind long after you have left the spa. |
| Aromatherapy Massage                | 60 min | R720 | Promotes healing, well-being and relaxation using pure essential oils and light massage strokes.  |
| Deep Tissue Massage                 | 60 min | R720 | A deep pressure massage to relieve tension and detoxify.  |
| Hot Stone Massage                   | 60 min | R720 | This re-energising stone therapy massage creates a cleansing, harmonizing and relaxing effect on the body.  |
| Swedish Body Massage                | 60 min | R660 | Provides a sense of well being, eases tense muscles and induces relaxation.   |
| Pregnancy Massage**                 | 60 min | R660 | This relaxing massage experience is specifically tailored to relieve typical pregnancy discomforts such as lower back ache and poor circulation. Keeping you and your baby's safety in mind, this treatment is only offered to Moms beyond their first trimester.   |
| Back, Neck & Shoulder Massage       | 60 min | R660 | This massage helps relieve the tension in the neck, shoulders, upper and lower back.  |
|                                     | 45 min | R540 |   |
|                                     | 30 min | R400 |   |
| Pressure Point Foot Massage         | 45 min | R540 | Relax and balance the body through stimulation of pressure points situated on the feet.   |
|                                     | 30 min | R400 |   |
| Indian Head Massage                 | 30 min | R400 | A detoxifying massage treatment of the head, scalp, face, neck and shoulders. This is a deeply relaxing massage combined with stimulating techniques, bringing about many beneficial results.   |

### ENHANCE YOUR MASSAGE WITH THE FOLLOWING ADDITIONS:

|  |      |
|--|------|
| Upgrade your 60min massage with an extra 30min | R290 |
| Add a Back Scrub                               | R100 |
| Add Hot Stones to your massage                 | R90  |
| Add Bellabaci Cups to your massage**           | R80  |

Massage is a powerful tool to help you take charge of your **health** and **well-being**.



# SKIN CARE THERAPY

## CSPA AROMA WELLNESS

|   |        |      |   |
|---|--------|------|---|
| CSpa Hydrating, Rebalancing or Anti-Ageing Facial | 60 min | R650 | This multi-sensory, results driven skin treatment includes a luxurious facial massage and an Aroma serum (either Hydra-Boosting, Age-Defying or Oily/Combination Rebalancing) to suit your skins main concerns. |
| CSpa Aroma Facial                                 | 30 min | R390 | CSpa's Aroma Wellness basic facial can be customised to all skin types and concerns.  |

## THALGO SKIN CARE

|  |        |        |   |
|--|--------|--------|---|
| Prodige Des Oceans Facial**              | 90 min | R2 500 | A supreme Beauty Ritual providing ultimate revitalization and total youthfulness. This treatment delivers the revitalizing benefits of Intelligence Regenerative Marine, a complete concentrate of 63 marine active ingredients (an exclusive Thalgo patent). At the heart of the ritual, the Prodige des Océans Mask offers pure plumping oxygenation, and its iconic massage, inspired by Ko Bi Do, an ancestral Japanese manual facelift technique, visibly smoothes wrinkles and restores firmness and elasticity to the skin. The face glows with renewed youth. |
| Silicium Super Lift Facial**             | 60 min | R2 000 | Smooth, Fill and Lift: This treatment excels in correcting loss of firmness and smoothing deep lines. The highly effective anti-wrinkle massage and Cryo-Sculpting Mask erase wrinkles and restore radiance.  |
| Thalgo Anti-Age Hyaluronic Filler Facial | 60 min | R1 800 | Smooth and Fill: This treatment corrects deep lines, leaving the skin looking visibly younger.  |
| Thalgo Brightening Facial**              | 60 min | R1 720 | A brightening and rejuvenating treatment that lightens the skin and improves pigmentation. Skin will appear visibly younger with renewed radiance and an even tone skin.  |
| Thalgo Source Marine Hydrating Facial    | 60 min | R950   | This facial corrects the hydration levels of the skin, deeply replenishing and restoring the skin's velvety-smooth feel and radiance. This treatment includes a revitalizing Infusion mask.   |
| Thalgo Ocea Men's Treatment              | 60 min | R940   | Whether your concern is dehydration, dryness, sensitivity or oiliness, this treatment provides a tailored solution for the male skin. Treatment includes a relaxing massage, leaving the skin revitalised and perfectly balanced.   |
| Thalgo Micronized Marine Algae Facial    | 60 min | R920   | The facial for oily/combination skin, uses the power of micronised marine algae, to rebalance and remineralise the skin leaving it clearer and purified.  |
| Thalgo Spa Skin Facial                   | 60 min | R690   | This classic facial is tailored to meet the specific needs of all skin types. Two treatment options (i.e. Source Marine or Cold Cream Marine Ritual).   |

|                                     |        |      |   |
|-------------------------------------|--------|------|---|
| Thalgo Deep Cleansing Facial        | 60 min | R690 | Specifically designed for combination to oily skin, this Pureté Marine treatment reduces imperfections, redefines pores and controls shine; with the optional inclusion of extractions. |
| Purity ThalgoMen Facial             | 45 min | R690 | Wake up and energise tired skin. Includes a full cleanse, scrub, energising digito-pressure massage and anti-fatigue mask resulting in clearer skin.                                    |
| Thalgo Illuminating Radiance Facial | 30 min | R510 | Unlock the secret to perfect radiance with a treat of sensoriality and effectiveness resulting in skin luminosity.  |

#### THALGO EYE EXPERT TREATMENTS

|                                       |      |   |
|---------------------------------------|------|---|
| Anti-Wrinkle Hyaluronic Eye Treatment | R390 | An express 2-in-1 treatment performed with the Hyaluronic Eye Patch Mask and Hyaluronic Filler which traces and fills the wrinkles. For a beautiful complexion and a radiant and instantly rejuvenated eye contour. |
|---------------------------------------|------|---|

#### SUGGESTED FACIAL TREATMENTS

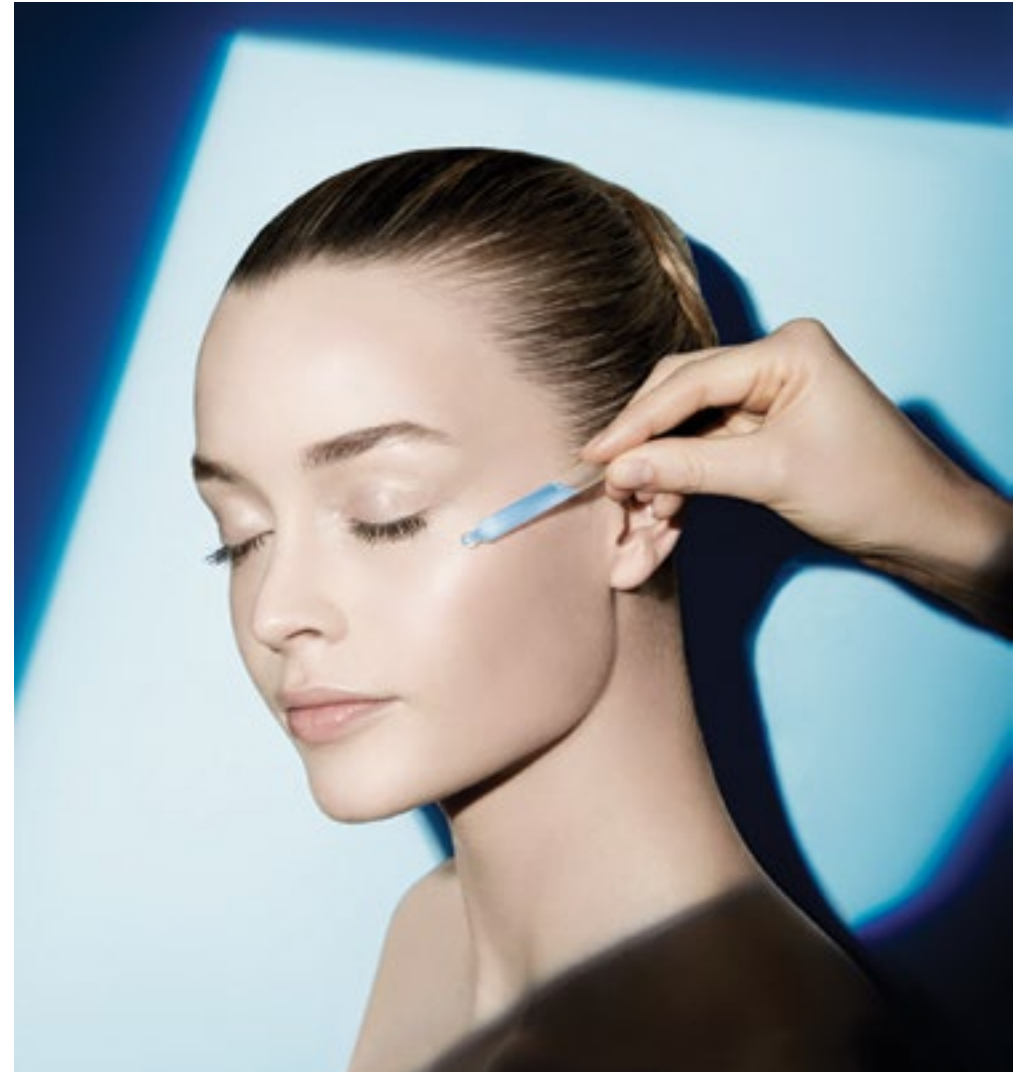
##### IDEAL FOR:

|   |                                       |
|---|---------------------------------------|
| CSpa Aroma Facial                                 | : Hydration                           |
| CSpa Hydrating, Rebalancing or Anti-Ageing Facial | : Hydration   Oily Skin   Anti-Ageing |
| Thalgo Illuminating Radiance Facial               | : Hydration                           |
| Thalgo Spa Skin Facial                            | : Hydration   Sensitive Skin          |
| Thalgo Deep Cleansing Facial                      | : Oily Skin   Combination Skin        |
| Purity ThalgoMen Facial                           | : Oily Skin   Combination Skin        |
| Thalgo Ocea Men's Treatment                       | : Hydration   Anti-Ageing             |
| Thalgo Micronized Marine Algae Facial             | : Acne   Balancing                    |
| Thalgo Source Marine Hydrating Facial             | : Hydration                           |
| Thalgo Brightening Facial**                       | : Pigmentation                        |
| Thalgo Anti-Age Hyaluronic Filler Facial          | : Anti-Ageing: Plump & Fill           |
| Silicium Super Lift Facial**                      | : Anti-Ageing: Plump, Fill & Lift     |
| Prodige Des Oceans Facial**                       | : Premier Anti-Ageing   Pigmentation  |

## MEDI SPA

#### MCEUTIC BY THALGO

|   |        |        |  |
|---|--------|--------|--|
| MCEutic Renovation Radicale Treatment** | 60 min | R1 380 | A true medically-inspired beauty treatment. It delivers a tailor-made 3-step treatment designed for imperfections, uneven skin tone, and rejuvenation. This non-invasive mesotherapy treatment incorporates a deeper peel, allowing for penetration to the deepest layers of the skin. No down time. |
|   | 30 min | R920   |  |





## WAXING

We offer a complete range of waxing services.  
Please consult with your therapist to identify your specific needs and desired results.

|                                  |        |      |
|----------------------------------|--------|------|
| Lip / Chin / Brow                | 15 min | R130 |
| Underarms / Sides of Face        | 20 min | R180 |
| Bikini / Half Arm                | 25 min | R190 |
| Half Leg / Full Arm / Half Chest | 30 min | R270 |
| Brazilian                        | 40 min | R300 |
| Back / Chest Wax                 | 45 min | R345 |
| Hollywood**                      | 45 min | R345 |
| Full Leg                         | 45 min | R400 |

## SPA BEAUTY TREATMENTS

The finishing touches for a healthy, well groomed, brand new you.

|                  |        |      |
|------------------|--------|------|
| Tint Lash & Brow | 30 min | R190 |
| Tint Lashes      | 25 min | R140 |
| Tint Brows       | 15 min | R110 |

## MANICURES & PEDICURES

|                            |        |      |
|----------------------------|--------|------|
| Deluxe Spa Pedicure        | 60 min | R430 |
| Deluxe Spa Manicure        | 60 min | R400 |
| Gelish Dip Acrylic**       | 45 min | R380 |
| Nailcare & Gel Polish      | 45 min | R345 |
| On-The-Go Pedicure         | 30 min | R290 |
| On-The-Go Manicure         | 30 min | R290 |
| Revarnish                  | 15 min | R215 |
| Gel Polish Add On          | 30 min | R180 |
| Gel Polish Removal         | 30 min | R140 |
| Paraffin Wax               | 15 min | R120 |
| Heel Peel Treatment Add On | 15 min | R120 |

On-The-Go Manicures/Pedicures include shaping of the nails, cuticle care, a hand/foot massage and varnishing of the nails. In addition to our basic manicure/pedicures, deluxe treatments include an exfoliation and specialised mask application.



## SPA BODY TREATMENTS

**Salt Glow** 30 min R330 This luxurious natural salt and coconut oil exfoliating body treatment improves the skins texture leaving it smooth and looking radiant.

### BODY WRAPS

**Thalgo Marine Algae Detox Wrap** 60 min R910 This "Thalassotherapy" body wrap helps achieve a fit body and general revitalisation. The body is prepared for a slimming treatment or ready to face everyday stress.

**CSpa Hydrating or Detox Wrap** 45 min R570 Choose between a relaxing or an invigorating aroma wellness body mud wrap. Hydrate with Neroli and Vanilla essential oils or detoxify with Peppermint and Rosemary essential oils.

### INTEGRATIVE SLIMMING BY THALGO

**High Precision Shaping Treatment\*\*** 60 min R1 300 The first corrective wrap treatment for superficial and deep fat, known to cause cellulite dimpling and skin slackening. The silhouette is visibly reshaped. Cellulite dimpling is significantly smoothed.

**Perfect Sculpt Slimming Massage\*\*** 30 min R550 A deep massage resulting in the figure looking visibly reshaped and re-sculpted. Body contours appear significantly redefined and dimpled skin is smoothed.

## HYDROTHERAPY

**Thalgo Seaweed Detox Hydrobath\*\*** 30 min R620 A Warm bath soak of Micronised Marine Algae helps to detox and re-mineralize the body, addressing overweight and cellulite conditions. Used as a slimming booster bath.

**CSpa Sensorial Shimmer Milk Hydrobath\*\*** 30 min R290 This sensorial shimmer milk bath is rich in vitamins. It is regenerating, rejuvenating and remineralising. Leaves the skin dusted in a shimmering veil.

**Rasul Self Application Treatment\*\*** 30 min R340 The Rasul treatment is a detoxifying cleansing ritual. This self-application of salt and mud detoxifies and rejuvenates the body leaving the skin satin smooth.

**Floatation Therapy\*\*** 30 min R290 The buoyancy of water and salt allows your body to float effortlessly as if in outer space or the Dead Sea. Escape into a state of complete relaxation and emerge with total wellness of mind, body and soul.

**Himalayan Salt Sauna\*\*** 30 min R290 This treatment offers a range of health benefits by producing a warm and soothing effect. Benefits include stress relief, detoxification, skin regeneration and strengthening of the immune system.

*\*\*Facilities & treatments vary according to Spa, please enquire upon booking. Floatation Therapy available at The Boardwalk, Le Franschoek, Pearls Mall and San Lameer only. Himalayan Salt Sauna available at The Boardwalk.*



## SPA EXPERIENCES

|  |  |                             |   |  |                         |                  |   |
|--|--|-----------------------------|---|--|-------------------------|------------------|---|
| Re-Energising Couples Journey  | 1hr 30min<br>per couple                | R1 950                      | 60min Aromatherapy Massage<br>15min Head Massage<br>15min Foot Massage  | Thalgo Polynesia Spa Ritual  | 1hr 30min<br>per couple | R1 300<br>R2 400 | The Polynesian Ritual takes you on a journey of relaxation filled with fragrances and colours from the pacific. This intoxicating body journey includes a scrub, hydrobath and an indulgent massage.<br><b>Couples:</b> Polynesia Spa Ritual for two and a glass of bubbly. |
| Gents Executive Package  | 2hrs 30min                             | R1 650                      | 60 min Deep Tissue / Hot Stone Body Massage<br>60 min Thalgo Ocea Men's Facial<br>30 min Pressure Point Foot / Indian Head Massage  | Mommy To Be  | 2hrs 30min              | R1100            | 60min Pregnancy Massage<br>30min On-The-Go Manicure<br>60min Deluxe spa Pedicure<br>Snacks  |
| Camelot Spa Personalised Journey   | 2hrs 30min<br>3hrs 30min<br>4hrs 30min | R1 400<br>R1 900<br>R2 400* | Tailor-make a Wellness Journey especially for you. Choose from any of the treatments below, and spend your desired amount of time pampering your every need.<br><b>30 min:</b><br>• Back, Neck & Shoulder Massage<br>• Indian Head Massage<br>• Pressure Point Foot Massage<br>• Salt Glow Body Scrub<br>• CSpa Hydrating Body Wrap<br>• CSpa Detox Body Wrap<br><b>60 min:</b><br>• Swedish Body Massage<br>• Aromatherapy Body Massage<br>• Thalgo Spa Skin Facial<br>• Deluxe Spa Pedicure<br>• Deluxe Spa Manicure (only available for 4hrs 30min Journey)<br><b>*Lunch (Included for 4hrs 30min Journey)</b> | Spa Taster   | 60 min                  | R760             | 30 min Back, Neck & Shoulder Massage<br>30 min Thalgo Illuminating Radiance Facial  |
|  |  |                             | Please ensure when booking this package, you inform the receptionist which of the treatments you have chosen.   | Tween Petite Personalised Journey<br>(children under the age of 12 only) | 60 min                  | R600             | Choose any three of the treatments below:<br>• 20min Back, Neck & Shoulder Massage<br>• 20min Booster Facial<br>• 20min Revarnish Hands and Feet<br>• 20min Hand Treatment<br>• 20min Foot Treatment  |
| <b>SPA EXPERIENCE ADD ONS (GROUP BOOKINGS ONLY):</b> <ul style="list-style-type: none"> <li>• Snacks</li> <li>• Personalised Satin Gown</li> <li>• Gift</li> </ul> |  |                             |   |  |                         |                  |   |
| <i>Please enquire upon booking for a price and lead time.</i>  |  |                             |   |  |                         |                  |   |





## WELLNESS ASSESSMENTS

Enhance your wellness experience by enquiring about our complimentary Body Composition Analysis options.

## CANCELLATION POLICY

- 24 Hours advance notice is required for cancellations and rescheduling, if this is not adhered to, 50% of the treatment fee will be charged.
- Late arrival will result in a reduction of treatment time whilst the full treatment fee will apply.

## SPA ESSENTIALS

- Treatments marked \*\* are not available at all Camelot Spas, please enquire upon booking.
- Booking in advance is recommended.
- Kindly arrive 15 minutes prior to your scheduled treatment(s) to change and complete a consultation form with your therapist.
- Please alert your therapist for the following contra-indications:
  - High blood pressure or heart conditions
  - Recent surgery Muscle or joint injuries
  - Allergy to iodine, or product allergies
  - Pregnancy, Epilepsy or Diabetes
- In a spirit of mutual respect we kindly request punctuality.
- Ensure cellular/mobile phones are switched off.
- Spa guests aged 16 years and under must be accompanied by an adult.
- Prices are subject to change without notice.
- Gratuities are not included in the treatment price. It is at your discretion to add a gratuity for treatment excellence.
- Camelot Spa is not responsible for any theft, damage, loss or misfortune that may occur.
- Please note that products bought at our spas are not refundable.
- Prices valid until 31 March 2019.
- All prices are inclusive of VAT.



## SPA WELLNESS MEMBERSHIPS

Join Camelot Wellness today. Invest in yourself, feel better and stay well.

### Annual Memberships\*

*(valid for 12 months)*

R5100

R8500

R15 300

R20 400

\*once off payment valid for one year

Once your membership miles are depleted, your membership will have to be renewed.

Membership can be used by more than one person.

Lower prices are charged during off-peak periods (Monday to Friday).

Joining fee of R100

Contact any of our spas for more information.

## GIFT CARDS & VOUCHERS

**Spoil someone special with a Gift Card or an Electronic Voucher, ideal for any occasion.**

Gift Cards are available for walk-in purchase from any Camelot Spa countrywide. Orders for delivery or electronic vouchers are dispatched from our Head Office Monday – Friday during office hours. No deliveries on Saturday & Sunday and orders for delivery on a Monday need to be placed before 12pm on Friday.

Deliveries possible within South Africa only, delivery to main centres takes 1 day.

Camelot Spa Gift Cards are valid for 3 years from date of issue. This does not apply to complimentary or prize vouchers.

# BRANCHES COUNTRYWIDE

## GAUTENG

### Melrose Arch

---

+27 (0) 11 684 1392  
melrosearch@camelotspa.co.za  
3rd Floor, The Medical Centre, 18 High Street,  
Johannesburg

### Protea Hotel Midrand

---

+27 (0) 11 318 0591  
midrand@camelotspa.co.za  
14th Street, Noordwyk Ext 20, Halfway House,  
Midrand

### The Capital Moloko

---

+27 (0) 11 384 4903  
moloko@camelotspa.co.za  
160 Helen Road, Strathavon, Sandton,  
Johannesburg

### The InterContinental

---

+27 (0) 11 961 5430  
camelot.spa@tsogosun.com  
8th Floor, The InterContinental Johannesburg,  
O.R. Tambo Airport

### The Marion on Nicol

---

+27 (0) 11 783 9952  
mariononnicol@camelotspa.co.za  
Hamilton Avenue & Stirling Avenue, Sandton,  
Johannesburg

### The Regent

---

+27 (0) 11 581 0231  
regent@camelotspa.co.za  
Ground Floor, 21 West Road South, Sandton,  
Johannesburg

### The Polofields (Coming Soon)

---

polofields@camelotspa.co.za  
Polofields Drive, Waterfall, Midrand

## KWAZULU-NATAL

### San Lameer Resort Hotel & Spa

---

+27 (0) 39 313 0642  
sanlameer@camelotspa.co.za  
Main Road, San Lameer, Southbroom

### The Pearls Mall

---

+27 (0) 10 900 3156  
thepearls@camelotspa.co.za  
Level 4, 6 - 8 Lagoon Drive, Umhlanga Rocks

## EASTERN CAPE

### The Boardwalk

---

+27 (0) 41 507 9419  
boardwalk@camelotspa.co.za  
Beach Road, Summerstrand, Port Elizabeth

## WESTERN CAPE

### Lagoon Beach Hotel

---

+27 (0) 21 528 2017  
camelotspa@lagoonbeachhotel.co.za  
1 Lagoon Gate Drive, Milnerton, Cape Town

### Le Franschoek Hotel & Spa

---

+27 (0) 21 876 2735  
lefranschoek@camelotspa.co.za  
16 Minor Road, Franschoek

### Southern Sun Cape Sun

---

+27 (0) 21 426 2644  
camelotcapesun@camelotspa.co.za  
23 Strand Street, Cape Town

### The Table Bay

---

+27 (0) 21 406 5904  
tbhspace@suninternational.com  
Quay 6, V&A Waterfront, Cape Town

### Val de Vie Estate

---

+27 (0) 21 867 8001  
valdevie@camelotspa.co.za  
R301, Wemmershoek Road, Paarl

## INTERNATIONAL

### President Walmont Hotel\*

---

+265 1 789 888  
presidentwalmont@camelotspa.co.za  
Chilembwe Road, City Centre, Lilongwe 3, Malawi

### Royal Swazi Spa

---

+268 2416 5284  
camelot.spa@suninternational.com  
Old Mbabane/Manzini, Main Road, Ezulwini Valley,  
Mbabane, Swaziland

### The Dome\*

---

+234 9096672095  
thedome@camelotspa.co.za  
Plot 423 Cadastral Zone, Central Business District,  
Abuja, Nigeria

### The Grand Palm\*

---

+267 363 7788 / 87  
grandpalm@camelotspa.co.za  
Plot 17989 Bonnington Farm, Molepolole Road,  
Gaborone, Botswana

\*Please request Price Lists for the selected  
International Branches as prices differ.

## CONTACT US

### CAMELOT SPA HEAD OFFICE

---

+27 (0) 11 880 3850 or +27 (0) 86 111 4075  
info@camelotspa.co.za  
Visit our website at [www.camelotspa.co.za](http://www.camelotspa.co.za)

   @CamelotSpaGroup



