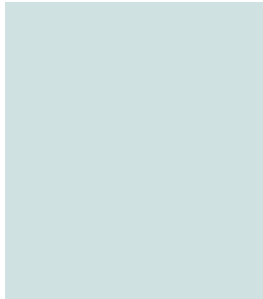
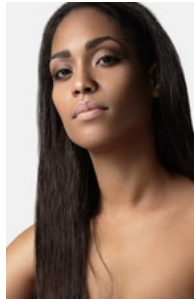
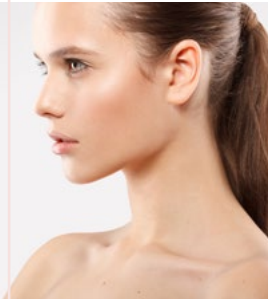


# TREATMENT MENU



## MASSAGE THERAPY

<b>Swedish Body Massage</b>	<b>60min</b>	<b>R720</b>
<b>Aromatherapy Massage</b>	<b>60min</b>	<b>R770</b>
<b>Back, Neck &amp; Shoulder Massage</b>	<b>30min</b>	<b>R440</b>
	<b>45min</b>	<b>R590</b>
<b>Hot Stone Massage</b>	<b>60min</b>	<b>R770</b>
<b>Indian Head Massage</b>	<b>30min</b>	<b>R460</b>
<b>Deep Tissue Massage</b>	<b>60min</b>	<b>R770</b>
<b>Pressure Point Foot Massage</b>	<b>30min</b>	<b>R440</b>
<b>Signature CBD Wellness Massage</b>	<b>60min</b>	<b>R790</b>

### ENHANCEMENTS:

<b>Add on Goodleaf CBD Oil</b> (May Be Added To Any Treatment)		<b>R110</b>
<b>Upgrade your 60min full body massage with an additional 30min</b>		<b>R310</b>
<b>Add Hot Stones (back only)</b>		<b>R100</b>
<b>Add Bellabaci Cups (back only)</b>		<b>R100</b>
<b>Add a Back Scrub</b>		<b>R150</b>
<b>Bellabaci Detox/Slimming Concentrate Oil</b>		<b>R150</b>
<b>Bellabaci Deep Relax Oil</b>		<b>R150</b>
<b>Bellabaci Muscle Support Oil</b>		<b>R150</b>
<b>Bellabaci Revive Oil</b>		<b>R150</b>

## SKIN CARE TREATMENTS

<b>Source Marine Hydra-Strengthening Treatment</b>	<b>60min</b>	<b>R1 100</b>
--	--------------	---------------

This facial corrects the hydration levels of the skin, deeply replenishing and restoring the skin's velvety-smooth feel and radiance. This treatment includes a revitalizing Infusion mask.

<b>Thalgo Spa Skin Facial</b>	<b>60min</b>	<b>R790</b>
-------------------------------	--------------	-------------

This classic facial is tailored to meet the specific needs of all skin types. Two treatment options (i.e. Source Marine or Cold Cream Marine Ritual).

<b>Purité Marine Purifying Treatment</b>	<b>60min</b>	<b>R790</b>
--	--------------	-------------

Specifically designed for combination to oily skin, this Purité Marine treatment reduces imperfections, redefines pores and controls shine; with the optional inclusion of extractions.

<b>Express Hydra-Radiance Facial</b>	<b>30min</b>	<b>R590</b>
--------------------------------------	--------------	-------------

The ultimate "illuminating" treatment, it boosts radiance and reveals the beauty of dull, tired complexions.

## ANTI AGEING

<b>Silicium Marin Super Lift Treatment</b>	<b>60min</b>	<b>R1 980</b>
--	--------------	---------------

A wrinkle lifting face, neck and décolleté treatment with double-masks. An infused sheet mask is activated on application and followed by a cryo-firming mask with dermal stimulation massage techniques including Dermastim+ massage.

<b>Thalgo Hyalu-Procollagene Wrinkle Correcting Treatment</b>	<b>60min</b>	<b>R1 430</b>
---	--------------	---------------

The first Thalgo wrinkle-by-wrinkle treatment combining hyaluronic acids & marine pro-collagen using Roller Boosters, with targeted action on even set-in wrinkles; for visible effectiveness, from the 1st treatment.

<b>ThalgoMen Fortifying Facial Treatment</b>	<b>60min</b>	<b>R1080</b>
--	--------------	--------------

Whether your concern is dehydration, dryness, sensitivity or oiliness, this treatment provides a tailored solution for the male skin. Treatment includes a relaxing massage, leaving the skin revitalised and perfectly balanced.

<b>Express Fortifying Treatment For Men</b>	<b>45min</b>	<b>R800</b>
---	--------------	-------------

Wake up and energise tired skin. Includes a full cleanse, scrub, energising digito-pressure massage and anti-fatigue mask resulting in clearer skin.

### ADD ONS:

<b>Thalgo Hyalu-Procollagene Wrinkle Correcting Pro Eye Treatment Add On To Facial</b>	<b>20min</b>	<b>R330</b>
--	--------------	-------------

## HELIX DNA TESTING

<b>Helix Skin Test</b>	<b>R1 632</b>
<b>Helix Health + Diet Test</b>	<b>R2 887</b>
<b>Helix Skin + Health + Diet Test</b>	<b>R3 517</b>
<b>Helix Hormone Test</b>	<b>R3 675</b>
<b>Skin + Health + Diet + Hormone Test</b>	<b>R4 410</b>

## INFUSIONS BY DOCTOR

<b>Immune Boost - High Dose Vitamin Infusion</b>	<b>R750</b>
200ml Ringers Lactate Vitamin C Vitamin B1,3,6 Vitamin B12	
<b>Zinc Add On</b>	<b>R75</b>
<b>Glutathione Add On</b>	<b>R150</b>
<b>Go Skin Glow</b>	<b>R1 200</b>
200ml Saline Vitamin C Zinc Selenium Glutathione	
<b>Vitamin B12 Add On</b>	<b>R75</b>
<b>Anti-Wrinkle Injections (Per Unit Of Botox)</b>	<b>R110</b>

## MICRO-NEEDLING

<b>Nano Needling Add On</b>	<b>15min</b>	<b>R330</b>
<b>Micro-Needling (Face Only)</b>	<b>75min</b>	<b>R1 200</b>
<b>Micro-Needling (Face &amp; Neck)</b>	<b>90min</b>	<b>R1 400</b>
<b>Micro-Needling (Face, Neck &amp; Décolleté)</b>	<b>120min</b>	<b>R1 700</b>

## Add On Optiphi Essential Skin Supplement **R220**

Each individual Skin Supplement boasts targeted active ingredients formulated to synergistically treat a specific concern on the skin and scalp.

*Gallic Acid | Fractionated HA | Vitamin B Complex*

## OPTIPHI PEELS

### Glycolic Acid Peel

This peel focuses on Total Skin Rejuvenation for all skin types. Improves cellular activity, resurfaces the skin, improves skin texture and stimulates the Fibroblasts which increase the production of dermal matrix compounds.

**Glycolic Acid 25% Peel** **45min** **R770**

Recommended for first time Optiphi treatment clients and clients with sensitized or dehydrated skins

**Glycolic Acid 30% Peel** **45min** **R770**

Recommended for subsequent treatments

**Lipohydroxy Acid Peel (LHA Peel)** **45min** **R820**

Intense chemical peel for clients who have undergone previous Glycolic Acid Skin Rejuvenation Peels up to 30%. Lipohydroxy Acid is a new generation peeling agent that is oil soluble, thus has a different mechanism of action to Glycolic Acid. The peel is an oil-based Beta Hydroxy Acid peel, penetrating the stratum corneum and follicles uniformly. Since the peel is not time dependant, but depth dependant, it does not need to be neutralized.

**LHA 30/30 Peel** **45min** **R820**

Powerful combination of Glycolic Acid, Ascorbic Acid and Glycyrrhetic Acid for clients who have undergone previous Glycolic Acid Skin Rejuvenation Peels up to 30%. Targets visual indicators of Inflammation, sun damage, pigmentation and collagen synthesis. An alternative to Lipohydroxy Acid Peel for clients with excessive photo damage and advanced aging

## SPA BODY TREATMENT

<b>Salt Glow Body Scrub</b>	<b>30min</b>	<b>R360</b>
<b>Hydrating or Detox Wrap</b>	<b>45min</b>	<b>R570</b>

## INTEGRATIVE SLIMMING

<b>Bellabaci Cellulite Cupping Treatment</b>	<b>30min</b>	<b>R500</b>
	<b>60min</b>	<b>R700</b>

Re-sculpt your body with the combination of cupping, hands-on massage and the use of a copper mitt, performed with premium hand-crafted all-natural aromatherapy oils formulated to target the visible signs of cellulite, expel toxins and breakdown lipids to detoxify and to give your body the ultimate deep cleanse. Target one area for 30min or target more than one area for 60mins.

## WAXING

<b>Lip / Chin / Brow</b>	<b>15min</b>	<b>R150</b>
<b>Full Face</b>	<b>20min</b>	<b>R260</b>
<b>Underarms / Sides Of Face</b>	<b>20min</b>	<b>R190</b>
<b>Bikini / ½ Arm</b>	<b>20min</b>	<b>R200</b>
<b>Brazilian</b>	<b>30min</b>	<b>R330</b>
<b>Hollywood (All)</b>	<b>30min</b>	<b>R370</b>
<b>Half Leg / Full Arm / ½ Chest</b>	<b>30min</b>	<b>R300</b>
<b>Full Leg</b>	<b>45min</b>	<b>R440</b>
<b>Back/Chest</b>	<b>45min</b>	<b>R390</b>

## BEAUTY TREATMENTS

### MANICURES & PEDICURES

<b>Classic Manicure</b>	<b>30min</b>	<b>R320</b>
<b>Classic Pedicure</b>	<b>30min</b>	<b>R320</b>
<b>Nail Care And Gelish</b>	<b>45min</b>	<b>R380</b>
<b>Deluxe Manicure</b>	<b>60min</b>	<b>R450</b>
<b>Deluxe Pedicure</b>	<b>60min</b>	<b>R480</b>
<b>Gelish Manicure</b>	<b>75min</b>	<b>R520</b>
<b>Gelish Pedicure</b>	<b>75min</b>	<b>R550</b>
<b>Revarnish</b>	<b>20min</b>	<b>R230</b>
<b>Acrylic Removal</b>	<b>40min</b>	<b>R220</b>
<b>Gelish Removal</b>	<b>20min</b>	<b>R130</b>
<b>Heel Peel Treatment Additional</b>	<b>20min</b>	<b>R120</b>

### TINTING

<b>Tint Brows</b>	<b>15min</b>	<b>R130</b>
<b>Tint Lashes</b>	<b>20min</b>	<b>R150</b>
<b>Tint Lash &amp; Brow</b>	<b>20min</b>	<b>R200</b>

## LASH LIFT & BROW LAMINATION

<b>Lash Lift</b>	<b>30 min</b>	<b>R550</b>
<b>Brow Lamination</b>	<b>30 min</b>	<b>R550</b>
<b>Add Tint Lash/Brow</b>	<b>10 min</b>	<b>R90</b>
<b>Add Brow Wax/Shape</b>	<b>10 min</b>	<b>R90</b>

## LASER LIPO

**Laser Lipo Treatment (1 Area) R440**

## SLIMMING & CONTOURING

**Fat Freeze Body Contouring 4 in 1 Treatment R1320**

**Fat Freeze Body Contouring 3 in 1 Treatment R900**

**Non-Surgical Brazilian Bum Lifting Treatment R850**

**Non-Surgical Breast Lift Treatment R850**

**Skin Tightening / Firming / Cellulite Treatment R660**

## INBODY SCAN

**Inbody Scan R275**

**2 Inbody Scans R440**

## LED MASK

**LED - Opera Mask 25min R275**

## MEDICAL WEIGHT LOSS

Personalised weight loss management packages available.

Price Dependant on treatment after doctors consultation.

This can include a full body assessment, IV drips, injectable, body treatments, machines and personal training based on individual needs.

## CANCELLATION POLICY

24 Hours advance notice is required for cancellations and rescheduling, if this is not adhered to, 50% of the treatment fee will be charged.

Late arrival will result in a reduction of treatment time whilst the full treatment fee will apply.

## SPA ESSENTIALS

- Prices valid until 31 March 2024.
- Booking in advance is recommended.
- Kindly arrive 15 minutes prior to your scheduled treatment(s) to change and complete a consultation form with your therapist.
- Please alert your therapist for the following contra-indications:
  - High blood pressure or heart conditions
  - Recent surgery Muscle or joint injuries
  - Allergy to iodine, or product allergies
  - Pregnancy, Epilepsy or Diabetes
- In a spirit of mutual respect we kindly request punctuality.
- Ensure cellular/mobile phones are switched off.
- Prices are subject to change without notice.
- Gratuities are not included in the treatment price. It is at your discretion to add a gratuity for treatment excellence.
- TITE Medi Spa by Camelot at Mantis No5 is not responsible for any theft, damage, loss or misfortune that may occur.
- Please note that products bought at our spas are not refundable.
- All prices are inclusive of VAT.

## BOOKINGS

041 008 5075 | [mantisno5@titemedispa.co.za](mailto:mantisno5@titemedispa.co.za)

Mantis No5, 5 Brighton Drive, Summerstrand, Port Elizabeth

